



*Unsere Ideen bewegen Menschen ...  
Our inventions move people ...*

enkaat  
res



**Renkaat | Tyres**

Jos tarvitset ilma-, polyuretaani-, tai ROLKOFILL-  
renkaita täältä löydät oikean renkaan jokaiseen  
käyttötarkoitukseen. Löydät vakiorenkaiden lisäksi  
innovaatioita Kenda-, Primo-, Swallow-merkeiltä.  
Sporttisia Indoor-renkaita Continentalilta ja Tufolta.  
Mikäli tarvitset puhkeamattoman renkaan voit valita  
Krypton-polyuretaanirenkaan tai Rolkofill - sisärenkaan.  
Erikoista kokoa olevat renkaat voidaan täyttää  
Polyfill - täytteellä.

If pneumatic tyres, polyurethane tyres or ROLKOFILL, here  
you will find the right tyre for every range of use. Besides  
all sizes of standard tyres there are also the innovations of  
Swallow, Primo and Kenda as well as indoor sports tyres from  
Continental and Tufo available. If puncture proof tyres are  
required we can offer you polyurethane tyres from Krypton or  
Rolkofill inserts. Special sizes can be filled with Polyfill.

**Kaikki mitat ovat likiarvoja.**  
**Kuvat eivät ole sitovia. Muutokset mahdollisia.**  
**Toimitukset toimitusehtojemme mukaisesti.**

All measures are approx. informations.  
Illustrations are not binding. Changings possible.  
We deliver as our latest general delivery conditions.



## Renkaat | Tyres 2006



*Unsere Ideen bewegen Menschen ...  
Our inventions move people ...*

# Tyres

## Sisältö | Content

- Ulkorenkaat aktiivipyörätuoleihin** | Tyres for active wheel chairs **4**
- „Indoor Sport“ renkaat** | Indoor sport tyres **9**
- Ulkorenkaat peruspyörätuoleihin** | Tyres standard **10**
- Ulkorenkaat sähköpyörätuoleihin** | Tyres for electric chairs **12**
- Sisärenkaat manuaalipyörätuoleihin** | Tubes for manual chairs **14**
- Sisärenkaat sähköpyörätuoleihin** | Tubes for electric chairs **16**
- Puhkeamattomat Rolkofill sisärenkaat** | Puncture proof inserts Rolkofill **17**
- Polyuretaanirenkaat** | Polyurethane tyres **18**



**Yksinoikeudella maailmassa! Musta rengas joka ei jätä pienintäkään tahraa. Uusi Black'n Roll kumiseos tekee mahdollisesta mahdollisen. Pyörätooli mustilla renkailla. Äärimmäisen kestävä seos on huomattavasti kulutuskestävämpi kuin perinteinen harmaa rengas. Käyttökustannuksiltaan edullisempi rengas koska siinä on kulutuskestävämpi ajopinta.**

World exclusive! Black tires that leave no unsightly marks. The new Black'n'Roll compound makes the impossible – possible: Wheelchairs with black tires. The extremely durable compound is far more abrasion resistant than ordinary grey colored tires. So the life-cost of these tires is much lower due to a much longer-lasting tread.



**Patentoitu, epäsymmetrinen, muotoilu on miellyttävä käsille. Jokaisella työllällä ja erityisesti jarrutettaessa käsi koskettaa rengasta aiheuttaen ärsytystä, hiertymiä ja jopa kipua. 2grip ratkaisu: renkaan kylki on täysin sileä ilman kohokirjaimia, dynamo-karhennusta.**

The patented, asymmetrical tread design that is kind to hands! At each push and particularly when braking the hands contact the tire side wall, so irritated, sore and chaffed hands are often the result. The 2grip® solution: A completely smooth sidewall where all roughness such as dynamo ribs and raised lettering has been removed and the tire tread smoothed off. The result: Hands glide smoothly past the tire.



**Sininen - pistosuojaus! Ainoastaan SmartGuard suojauskella varustettuja renkaita voidaan kutsua puhkeamattomiksi. SmartGuard on valmistettu erittäin elastisesta, erikois kumista. Syväälle painuneet lasin sirpaleet tai terävät hiekan jyvät eivät läpäise suojakerrosta näin SmartGuard luo maksimaalisen puhkeamattomuuden. Renkaat, joissa on SmartGuard- pistosuojaus rullaa aivan yhtä hyvin kuin tavallinen rengas.**

Out of the blue - puncture protection! Only tires with SmartGuard® protection can be called 'Flat-less'. SmartGuard® is made from a highly elastic, special india rubber. Embedded glass shards or flints cannot work their way through the protective layer, so SmartGuard® offers the maximum in puncture protection! Tires with the SmartGuard® puncture protection belt run as easily as a normal pneumatic tire without a belt.



**Marathon Plus Evolution**

Tuuma Inch	Bar	ETRTO-Nr. ETRTO-No.	Art.-Nr Art.-No.
24x1"	10	25-540	URM25540/MPE
26x1" (5.59)	10	25-559	URM25559/MPE
26x1"	10	25-590	URM25590/MPE



**DownTown**

Tuuma Inch	Bar	ETRTO-Nr. ETRTO-No.	Art.-Nr Art.-No.
24x1"	10,0	25-540	URH25540/DT/SW
24x1.3/8"	5,0	37-540	URH37540/DT/SW



**HomeRun**

Tuuma Inch	Bar	ETRTO-Nr. ETRTO-No.	Art.-Nr Art.-No.
24x1"	10,0	25-540	URH25540/HR/SW
24x1.3/8"	5,0	37-540	URH37540/HR/SW
26x1"	10,0	25-590	URH25590/HR/SW
26x1"	10,0	25-559	URH25559/HR/SW



## Ulkorenkaat aktiivipyörätuoleihin

| Tyres for active wheel chairs



**2grip**

**smartguard**



### Marathon Plus

Tuuma Inch	Bar	ETRTO-Nr. ETRTO-No.	Art.-Nr Art.-No
22x1"	10	25-48 9	URH25489/MP2G/SW
24x1"	10	25-540	URH25540/MP2G/SW
24x1.3/8"	10	37-540	URH37540/MP2G/SW
26x1" (5 59)	10	25-559	URH25559/MP2G/SW
26x1"	10	25-590	URH25590/MP2G/SW



### Stelvio

Tuuma Inch	Bar	ETRTO-Nr. ETRTO-No.	Art.-Nr Art.-No
20x1.1/2"	8,5	28-406	URM28406/HS350
26x1"	6,0-8,5	25-559	URM25559/HS350
26x7/8"	10,0	23-571	URM23571/HS350
28x7/8"	10,0	23-622	URM23622/HS350



### LandCruiser

Tuuma Inch	Bar	ETRTO-Nr. ETRTO-No.	Art.-Nr Art.-No
24x1.75"	4,5	47-507	URM47507/HS307



## Ulkorenkaat aktiivipyörätuoleihin | Tyres for active wheel chairs

### Active

Tuuma Inch	Bar	ETRTO-Nr. ETRTO-No.	Art.-Nr Art.-No
22x1"	7,0	25-48 9	URH25489/HS228/SW
24x1"	10,0	25-540	URH25489/HS228/SW



**PUNCTURE  
PROTECTION**

### Active

Tuuma Inch	Bar	ETRTO-Nr. ETRTO-No.	Art.-Nr Art.-No
20x1"	7,5	25-45 1	URH25451/1051
22x1"	7,5	25-48 9	URH25489/1051
24x1"	10,0	25-540	URH25540/1051



**PUNCTURE  
PROTECTION**

### Active

Tuuma Inch	Bar	ETRTO-Nr. ETRTO-No.	Art.-Nr Art.-No
24x1"	10,0	25-540	URH25540/1051/SW
26x1"	10,0	25-590	URH25590/1051/SW
26x3/4"	10,0	25-559	URH25559/1051/SW



**PUNCTURE  
PROTECTION**



**Primo**

Tuuma Inch	Bar	ETRTO-Nr. ETRTO-No.	Art.-Nr Art.-No
22x1"	7,0	25-501	URH25501/PRI/SW
24x1"	7,0	25-540	URH25540/PRI/SW
24x1.3/8	4,5	37-540	URH37540/PRI/SW
26x1"	7,5	25-590	URH25590/PRI/SW
26x1"	7,5	20-559	URH25559/PRI/SW



**Primo Cross Court**

Tuuma Inch	Bar	ETRTO-Nr. ETRTO-No.	Art.-Nr Art.-No
24x1"	10	25-540	URH25540/1157/SW



**Primo Passage**

Tuuma Inch	Bar	ETRTO-Nr. ETRTO-No.	Art.-Nr Art.-No
24x1"	7,0	25-540	URH25540/1195/SW



**Kenda**

Tuuma Inch	Väri Colour	Bar	ETRTO-Nr. ETRTO-No.	Art.-Nr Art.-No
24x1	sininen / blue	7,5	23-540	URS23540/K191/blue
24x1	keltainen / yellow	7,5	23-540	URK23540/K191/yel
24x1	punainen / red	7,5	23-540	URS23540/K191/red
25x1	sininen / blue	7,5	23-559	URS23559/K191/blue
25x1	keltainen / yellow	7,5	23-599	URS23559/K191/yel
25x1	punainen / red	7,5	23-599	URS23559/K191/red
26x1	sininen / blue	7,5	23-590	URS23590/K196/blue
26x1	keltainen / yellow	7,5	23-590	URS23590/K196/yel
26x1	punainen / red	7,5	23-590	URS23590/K196/red

**Renkaat sisäkäyttöön urheilupyörätuoleihin.**

**Renkaan erityisen luja runko mahdollistaa korkeat rengaspaineet.  
Renkaan liimaaminen vanteelle on suositeltavaa.**

Tyres for indoor wheelchair sport

Its exceptionally strong carcass withstands the extreme loads. It is recommended to glue the tubular tyre on the rim.

**Continental**

Tuuma Inch	Bar	Art.-Nr Art.-No
20x1	10,0	SA20x1-C
22x1	10,0	SA22x1-C
24x1	10,0	SA24x1-C
24x1.1/8	8,0	SA24x1.1/8-C
26x1	10,0	SA26x1-C
26x1.1/8	8,0	SA26x1.1/8-C



**TUFO**

Tuuma Inch	Bar	Art.-Nr Art.-No
20x1	16,0	SA20x1-TUFO
22x1	16,0	SA22x1-TUFO
24x1	16,0	SA24x1-TUFO
26x1	16,0	SA26x1-TUFO
26x1.1/8	16,0	SA26x1.1/8-TUFO
28x1.1/8	16,0	SA28x1-TUFO





Tuuma Inch	Väri Colour	Bar	ETRTO-Nr. ETRTO-No.	Art.-Nr Art.-No.		
6x1.1/4"	G	C-179	2,5	32-86	URH3274/179	
6x1.1/4"	G	C-187	2,5	32-86	URH3274/187	
7x1.3/4"	G	C-179	2,5	47-93	URH4794/179	
7x1.3/4"	S	IA-2611	2,5	47-93	URM4794/IA2611	
190x51	S	IA-2611	2,5	-	URH19051/IA2611	
8x1.1/4"	G	C-179	2,5	32-137	URH32137/179	
8x2" (2 00 x 5 0)	G	C-179	2,5	-	URH20050/179	
8x2" (2 00 x 5 0)	G	V 38	2,5	-	URH20050/V38	
8x2" (2 00 x 5 0)	S	C-179	2,5	-	URM20050/179	
8.1/2x2"	G	IS 302	2,5	-	URH22012050/IS302	
10x2"	G	C-179	2,5	54-152	URH54152/179	
10x2"	S	C-179	2,5	54-152	URM54152/179	
10x2.125"	S	IA-2611	2,5	-	URM57152/IA2611	
290x60	S	IA-2611	2,5	-	URM29060/IA2611	
12.1/2x2. 1/4"	G	IS 167	2,5	62-203	URH62203/IS167	
12.1/2x2. 1/4"	S	IS 167	2,5	62-203	URM62203/IS167	
12.1/2x2. 1/4"	S	IA-2611	2,5	62-203	URM62203/IA2611	
12.1/2x2. 1/4"	mittelverstärkt	G	C-623	2,5	62-203	URH62203/623
12.1/2x2. 1/4"	mittelverstärkt	S	C-623	2,5	62-203	URM62203/623
12.1/2x2. 1/4"	verstärkt	G	C-628	2,7	62-203	URH62203/628
12.1/2x2. 1/4"	verstärkt	S	C-628	2,7	62-203	URM62203/628
16x1.75x2"	G	C-97	3,5	47-305	URH 47305/97	
16x1.75x2"	S	C-97	3,5	47-305	URM47305/97	
18x1.75"	S	IS 167	3,0	47-355	URM47355/IS167	
20x1.3/8"	G	C-63	4,0	37-451	URH37451/63	
20x1.75"	G	C-97	3,0	47-406	URH4706/97	
20x1.90"	S	HS 285	3,5	47-406	URM47406/HS285	
20x2.0 0"	G	C-109	2,0	54-406	URH54406/109	
20x2.0 0"	S	C-109	2,0	54-406	URM54406/109	
20x2.2 5"	S	HS 241	2,0	57-406	URM57406/HS241	
20x2.2 5"	Roadster	S	HS 242	2,0	57-406	URM57406/HS242
22x1.3/8"	G	C-63	4,0	37-489	URH37489/63	
22x1.3/8"	G	C-97	4,0	37-498	URH37498/97	
22x1.3/8"	G	C-63	4,0	37-501	URH37501/63	
24x1.3/8"	G	C-63	4,0	37-540	URH37540/63	
24x1.3/8"	Pannenschutz	G	C-97	5,0	37-540	URH37540/97
24x1.3/8"	Super Leichtlauf	G	C-746	3,5	37-540	URH37540/746
24x1.3/8"	Spezial	G	HS 228	6,0	37-540	URH37540/HS228
24x1.75"	G	C-97	3,0	47-507	URH47507/97	
26x1.3/8"	G	IS 102	4,0	37-590	URH37590/IS102	
26x1.75"	S	IS 102	3,0	47-559	URM47559/IS102	

G = harmaa S = musta | G = grey S = black



**C-179**  
2.50-3  
2.80/2.5 0-4  
3.00-4 (2 60 x 85)  
3.00-8

**C-920**  
3.00-4 (2 60 x 85)

**C-917**  
3.00-5  
3.00-6  
4.10/3.5 0-6  
3.00-8  
3.00-10

**C-156**  
4.10/3.5 0-4  
4.10/3.5 0-5  
4.10/3.5 0-6

**C-713**  
16 x 2.125  
20 x 2.125

**C-189**  
2.80/2.5 0-4

**C-248**  
3.00-4 (2 60 x 85)  
4.00-4  
3.00-8



**C-131**  
5.30/4.5 0-6  
3.00-10  
3.50-10

**C-154**  
4.00-5

**C-165**  
13 x 5.0 0-6

**C-168**  
4.00-8 (4 00 x 100)

**C-628**  
2.50-3

**C-177**  
2.50-6  
2.50-8

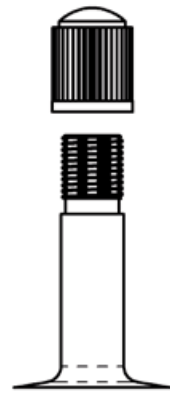
**C 1217**  
12.1/2 x 2. 1/4



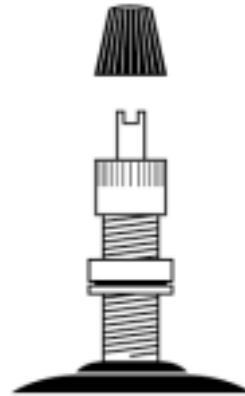
**C-9261**  
3.00-6  
3.00-8

Tuuma Inch	Väri Colour	Ply		Bar	Art.-Nr Art.-No
8.1/2x2"	G	4	IS 302	2,5	URH22012050/IS302
2.50-3"	G	4	C-179	2,5	URH2503/179/4
2.50-3"	S	4	C-179	2,5	URM2530/179/4
2.50-3"	G	4	C-628	2,5	URH2503/628/4
2.80/2.5 0-4"	G	4	C-179	2,5	URH2802504/179/4
2.80/2.5 0-4"	S	4	C-179	2,5	URM2802504/179/4
2.80/2.5 0-4"	G	4	C-189	2,5	URH2802504/189/4
2.80/2.5 0-4"	S	4	C-189	2,5	URM2802504/189/4
3.00-4" (2 60 x 85)	G	4	C-179	2,5	URH3004/179/4
3.00-4" (2 60 x 85)	S	4	C-179	2,5	URM3004/179/4
3.00-4" (2 60 x 85)	G	4	C-248	2,5	URH3004/248/4
3.00-4" (2 60 x 85)	S	4	C-248	2,5	URM3004/248/4
3.00-4" (2 60 x 85)	G	4	C-920	2,5	URH3004/920/2
3.00-4" (2 60 x 85)	S	4	C-920	2,5	URM3004/920/2
4.00-4"	G	4	C-248	2,5	URH4004/248/4
4.00-4"	S	4	C-248	2,5	URM4004/248/4
4.10/3.5 0-4"	G	4	C-156	2,5	URH4103504/156/
4.10/3.5 0-4"	S	4	C-156	2,5	URM4103504/156/
3.00-5"	G	4	C-917	2,5	URH3005/920/4
4.10/3.5 0-5"	G	4	C-156	3,5	URH4103505/156/4
4.10/3.5 0-5"	S	4	C-156	3,5	URM4103505/156/4
4.00-5"	G	4	C-154	3,5	URH4005/154/4
2.50-6"	G	4	C-177	3,5	URH2506/177/4
3.00-6"	G	4	C-917	4,0	URH3006/917/4
3.00-6"	G	4	C-9261	4,0	URH3006/9261/4
4.10/3.5 0-6"	G	4	C-917	4,0	URH4103506/917/4
4.10/3.5 0-6"	G	4	C-156	3,5	URH4103506/156/4
4.10/3.5 0-6"	S	4	C-156	3,5	URM4103506/156/4
5.30/4.5 0-6"	G	4	C-166	3,5	URM5304506/166/4
13x5.0 0-6"	G	4	C-165	3,5	URH135006/165/4
13x5.0 0-6"	S	4	C-165	3,5	URM135006/165/4
12.1/2x2. 1/4"	G	4	C 1217	2,7	URH62203/1217/4
2.50-8"	G	4	C-177	2,5	URH2508/177/4
2.50-8"	S	4	C-177	2,5	URM2508/177/4
3.00-8"	G	4	C-179	2,5	URH3008/179/4
3.00-8"	S	4	C-179	2,5	URM3008/179/4
3.00-8"	G	4	C-248	2,5	URH3008/248/4
3.00-8"	S	4	C-248	2,5	URM3008/248/4
3.00-8"	G	4	C-917	2,5	URH3008/917/4
3.00-8"	S	4	C-917	2,5	URM3008/917/4
3.00-8"	G	4	C-9261	4,0	URH3008/9261/4
4.00-8"	G	4	C-168	2,0	URH4008/168/4
4.00-8"	S	4	C-168	2,0	URM4008/168/4
3.00-10"	G	4	C-917	2,5	URH30010/917/4
3.00-10"	S	4	C-917	2,5	URM30010/917/4
3.00-10"	G	4	C-131	2,0	URH30010/131/4
3.00-10"	S	4	C-131	2,0	URM30010/131/4
3.50-10"	G	4	C-131	2,5	URH35010/131/4
3.50-10"	S	4	C-131	2,5	URM35010/131/4
16x2.125"	G	2	C-713	3,0	URH57305/713/2
16x2.125"	S	2	C-713	3,0	URM57305/713/2
20x2.125"	G	2	C-713	3,0	URH57406/713/2
20x2.125"	S	2	C-713	3,0	URM57406/713/2

G = harmaa S = musta | G = grey S = black



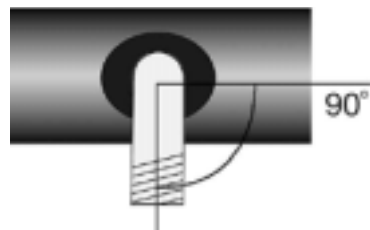
AV Suora | Straight



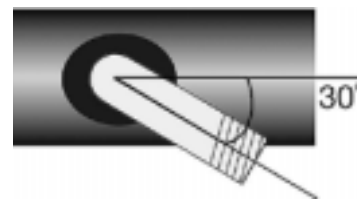
AV TR4



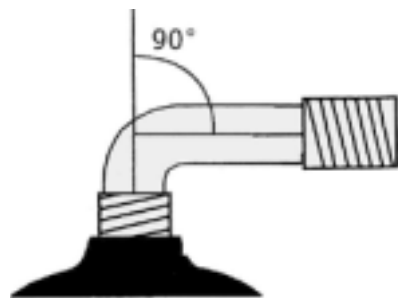
SV Presta



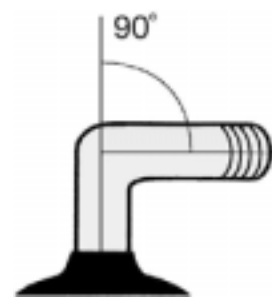
AV 90/90°



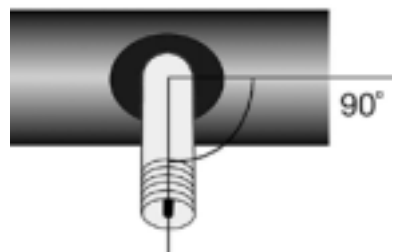
AV 30/90°



AV 90/45°



AV 30/90°



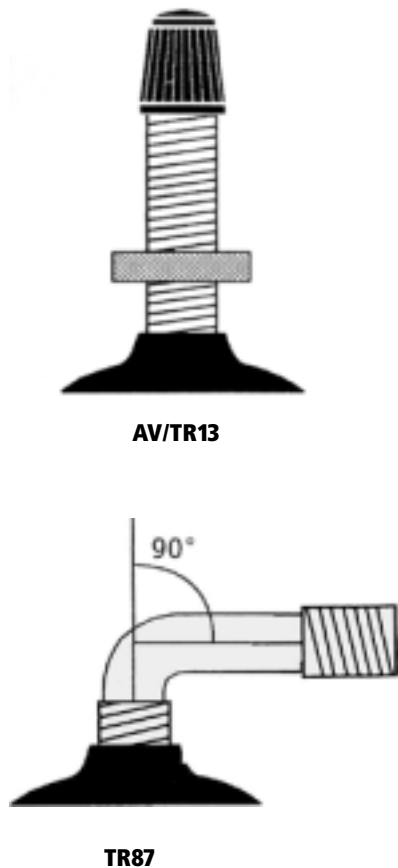
Sisärenkaat aktiivipyörätuoleihin | Tubes for active chairs

Tuuma Inch	Valvuri	ETRTO-Nr. ETRTO-No.	Art.-Nr. Art.-No.
20x1"	AV	25-451	SR25451/AV
22x1"	AV	25-489/501	SR25489/AV
24x1"	AV	25-540	SR25540/AV
26x1"	AV	25-559	SR25559/AV
26x1"	AV	25-559	SR25590/AV
24x1"	SV	25-540	SR25540/SCV
26x1"	SV	25-559	SR25559/SCV
26x1"	SV	25-559	SR25590/SCV

Sisärenkaat peruspyörätuoleihin | Tubes for standard chairs

Tuuma Inch	AV	DIN/TR-Nr. DIN/TR-No.	ETRTO-Nr. ETRTO-No.	Art.-Nr. Art.-No.
6x1.1/4"	90/35°	DIN 7768	32-86	SR3274/9045
7x1.3/4" + 2 00x50	30/90°	AV	-	SR20050/3090
7x1.3/8" + 2 00x50	90/90°	DIN 7768	-	SR20050/9090
7x1.3/4" + 2 00x50	90/45°PP	-	-	SR20050/9045PP
8x1.1/4"	90/45°	DIN 7768	32-137	SR20050/9045/PP
8x1.1/4"	30/45°	DIN 7768	32-137	SR32137/AV
8.1/2x2"	90/35°	DIN 7768	-	SR32137/9045
10x2"	0/30°	AV 0/30°	54-152	SR54152/30
10x2"	90/90°	DIN 7768	54-152	SR54152/9090
10x2"	Suora / straight	AV	54-152	SR54152/AV
12.1/2x2.1/4"	Suora / straight	AV	62-203	SR47203/AV
12.1/2x2.1/4"	90/90°	DIN 7777	62-203	SR47203/9090
16x1.75/2.125"	Suora / straight	AV	47/57-305	SR47306/AV
18x1.75"	Suora / straight	AV	47-355	SR47355/AV
20x1.3/8"	Suora / straight	AV	37-451	SR37451/AV
20x1.75/2.125"	Suora / straight	AV	47/57-406	SR47406/AV
20x2.00"	Suora / straight	TR 4	47/57-406	SR54406/AV
20x2.00"	90/90°	TR 87	45/57-406	SR54406/9090
20x2.00/2.25"	Suora / straight	TR 4	54/57-406	SR57406/4
22x1.3/8"	Suora / straight	AV	28/40-489/501	SR37489/AV
24x1.3/8"	Suora / straight	AV	28/37-540/541	SR37540/AV
24x1.75"	Suora / straight	AV	40/57-489/507	SR47507/AV
26x1.3/8"	Suora / straight	AV	37-590	SR37590/AV
26x1.75"	Suora / straight	AV	40/57-559/584	SR47559/AV
28x1.3/8"	Suora / straight	AV	35/47-622/635	SR47622/AV

Erikoistilauksesta sisärenkaat myös pikaventtiilillä | Tubes with bicycle valve on request



Tuuma Inch	DIN/TR-Nr. DIN/TR-No.	Art.-Nr Art.-No.
2.50-3"	TR 87	SR2503/87
2.50-4"	TR 87	SR2504/87
3.00-4" (2 60 x 85)	TR 87	SR3004/13
3.00-4" (2 60 x 85)	TR 13	SR3004/87
4.00-4"	TR 87	SR4004/87
4.10/3.5 0-4"	TR 87	SR4103504/87
4.10/3.5 0-5"	TR 87	SR4103505/87
2.50-6"	TR 87	SR2506/87
3.00-6"	TR 87	SR3006/87
4.10/3.5 0-6"	TR 87	SR4103506/87
13x5.0 0-6"	TR 87	SR135006/87
13x5.0 0-6"	TR 13	SR135006/13
2.50-8"	TR 87	SR2508/9090
3.00-8"	TR 87	SR3008/87
3.00-8"	TR 13	SR3008/13
3.50-8"	TR 87	SR3504008/87
4.00-8"	TR 13	SR3504008/13
3.00-10"	TR 13	SR30010/13
3.00-10"	TR 87	SR30010/87
3.50-10"	TR 87	SR35010/87
2.25-14"	TR 87	SR22514/87
16x2.125"	AV	SR57305/AV
20x2.125"	AV	SR57406/AV

Vanne nauhat | Rim tapes

Tuuma Inch	DIN/TR-Nr. DIN/TR-No.	Art.-Nr Art.-No.
12.1/2 x 2.1/4"	24-203-20	FB310/55
20 x 2.00"	16/19-23	FB20x2.00
22 x 1.3/8"	20-489/507-12	FB22x1.3/8
24 x 1.3/8"	18-540-12	FB24x1.3/8
24 x 1.75"	20-489/507-12	FB24x1.75
26 x 1.3/8"	20-590-13	FB26x1.3/8

Polyuretaanivannenuhat | Rim tapes in polyurethane

Tuuma Inch	DIN/TR-Nr. DIN/TR-No.	Art.-Nr Art.-No.
24 x 1"	25-540	FB-PU24x1
26 x 1"	20-559	FB-PU26x1-559

Rokofill-sisärenkas | Rolkofill insert, loose

Tuuma Inch		DIN/TR-Nr. DIN/TR-No.	Art.-Nr Art.-No.
6x1.1/4"		32-86	FL150/30
8x1.1/4"		32-137	FL200/30
10x2"		54-152	FL250/50
10x2"	verstärkt	54-152	FL250/50-M
12.1/2x2.1/4"	Standard	62-203	FL310/55
12.1/2x2.1/4"	mittelverstärkt	62-203	FL310/55-M
12.1/2x2.1/4"	verstärkt	62-203	FL310/55-V
22x1.3/8"		37-489	FL22x1.3/8
24x1.75"		47-507	FL24x1.75
24x1"		25-540	FL24x1
24x1.3/8"		37-540	FL24x1.3/8
26x1"		25-559	FL26x1-559
26x1"		25-590	FL26x1
26x1.3/8"		37-590	FL26x1.3/8



Rokofill- puhkeamaton rengas, 2-osaiselle vanteelle

| Rolkofill insert with tyre for 2-part rim

Tuuma Inch	Väri Colour		Art.-Nr Art.-No.
7x1.3/4"	G	Rille	FLTH7134/179
8x2" (2 00x5 0)	G	Rille	FLTH20050/179
8x2" (2 00x5 0)	S	Rille	FLTM20050/179
2.50-3"	G	Rille	FLTH2503/179/4
2.50-3"	G	Block	FLTH2503/628/4
2.80-2.50-4"	G	Rille	FLTH2802504/179/4
2.80-2.50-4"	G	Military	FLTH2802504/189/4
3.00-4" (2 60x8 5)	G	Rille	FLTH3004/179/4
3.00-4" (2 60x8 5)	G	Block	FLTH3004/248/4
3.00-4" (2 60x8 5)	S	Rille	FLTM3004/179/4
3.00-4" (2 60x8 5)	S	Block	FLTM3004/248/4
3.00-4" (2 60x8 5)	G	Racing	FLTH3004/920/4
3.00-4" (2 60x8 5)	S	Racing	FLTM3004/920/4
4.10/3.5 0-6"	G	Block	FLTH4103506/156/4
4.10/3.5 0-6"	S	Block	FLTM4103506/156/4
3.00-8"	G	Block	FLTH3008/248/4
3.00-8"	S	Block	FLTM3008/248/4
3.00-8"	G	Highway	FLTH3004/917/2
3.00-8"	S	Highway	FLTM3004/917/2



1-osaiselle vanteelle vaihtoehtona  
Polyfill renkaan täyte.

Pääasiassa 1-osaisille vanteille, joille Rolkofill-rengas ei sovellu, voimme tarjota Polyfill-renkaan täytteen.

Polyuretaanin ja muovin sekoitteesta koostuva täyte pumpataan venttiiliin kautta renkaan sisälle ja se muodostaa elastisen kumimaisen täytteen. Polyfill-täytettä voidaan käyttää kaiken kokoisiin renkaisiin.

Alternative for 1-part rims – Polyfill tyre filling

Primarily for 1-part rims on which the assembly for puncture proof insert isn't possible, we offer you a Polyfill tyre filling. It consists of a liquid polyurethane-plastic mixture which will be pumped through the valve into the tyre and gets an elastic rubber core. Polyfill can be used for any size of tyre.

G = harmaa S = musta | G = grey S = black



RC

10 x 2"  
12.1/2 x 2.1/4"  
3.00 - 4  
4.00 - 8



WC

18 x 1.3/8"  
20 x 1.3/8"  
22 x 1"  
22 x 1.3/8"  
24 x 1"  
24 x 1.3/8"  
26 x 1"



KDB

16 x 1.75"  
20 x 1.75"  
24 x 1.75"



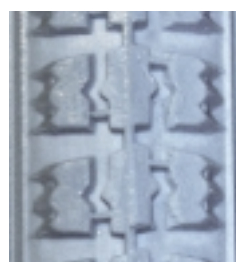
KLB

24 x 1.0"  
24 x 1.3/8"  
26 x 1.3/8"



PYR

22 x 1"  
24 x 1"  
26 x 1"



KB

22 x 1.3/8"



EWC

12.1/2 x 2.1/4"



EWCX

16 x 2.125"



XP

3.00 - 4"



KN

3.00 - 8"



SCOOTY

3.00 - 4"



M

12.1/2 x 2.1/4"

Tuuma Inch	Väri Colour					ETRTO-Nr ETRTO-No.	Art.-Nr Art.-No.
10x2"	G	RC	28	50	42	54-152	PU-54-152GRC28
12.1/2x2.1/4"	G	RC	28	46	50	57-203	PU-57-203-GRC28
12.1/2x2.1/4"	G	EWC	28	46	50	57-203	PU-57-203GEWC28
12.1/2x2.1/4"	G	M	28	50	45	57-203	PU-57-203-G-M28
12.1/2x2.1/4"	G	EWC	44	63	52	62-203	PU-67-203GEWC44
16x1.75"	G	KDB	25	37	25	47-305	PU-47-305GKDB25
16x2.00"	G	RC	26	40	40	50-305	PU-50-305GRC
16x2.125"	G	EWCX	26	56	43	57-305	PU-57-305GEWCX
18x1.3/8"	G	WC	21	32	24	37-400	PU-37-400GWC121
20x1"	G	WC	16-18	23	19	25-451	PU-25-451GWC16
20x1.3/8"	G	WC	22	32	24	37-451	PU-37-451GWC122
20x1.3/8"	G	KB	21	32	24	37-441	PU-37-451GKB121
20x1.75"	G	KDB	25	37	25	47-406	PU-47-406GKDB25
20x2.125"	G	EWCX	29	57	45	57-406	PU-57-406GEWCX
22x1"	G	WC	21	25	20	25-489	PU-25-489GWC121
22x1"	G	WC	16-18	23	19	25-489	PU-25-489GWC16
22x1"	G	PYR	21	27	12	25-489	PU-25-489GPYR21
22x1.3/8"	G	WC	21	32	24	37-489	PU-37-489GWC121
22x1.3/8"	G	KB	21	32	24	37-489	PU-37-489GKB121
22x1.3/8"	G	WC	21	32	24	37-501	PU-37-501GWC121
22x1.3/8"	G	KB	21	32	24	37-501	PU-37-501GKB121
24x1"	G	WC	16	22	20	25-540	PU-25-540GWC116
24x1"	G	WC	20	25	20	25-540	PU-25-540GWC120
24x1"	S	WC	20	25	20	25-540	PU-25-540SWC120
24x1"	G	KLB	20	25	20	25-540	PU-25-540GKL120
24x1"	G	PYR	21	27	12	25-540	PU-25-540GPYR21
24x1.3/8"	G	WC	21	32	24	37-540	PU-37-540GWC121
24x1.3/8"	G	KLB	21	32	24	37-540	PU-37-540GKLB21
24x1.75"	G	KDB	25	37	25	47-507	PU-47-507GKDB25
26x1"	G	WC	19	25	20	25-559	PU-25-559GWC119
26x1"	G	WC	22	25	20	25-590	PU-25-590GWC22
26x1"	G	PYR	21	27	12	25-590	PU-25-590GPYR21
26x1.3/8"	G	KLB	22	30	26	37-590	PU-37-590GKLB22
26x1.75"	G	KDB	25	37	25	47-559	PU-47-559GKDB25

2.50-3"	G	EWC	44	65	60		PU-R210/65-GEWC
2.80/2.50-4"	G	EWC	46	57	50		PU-R2.80/2.50-4
3.00-4" (260 x 85)	G	RC	55	80	72		PU-R260/85-GR
3.00-4" (260 x 85)	G	XP	55	77	68		PU-R260/85-GB
3.00-4" (260 x 85)	S	XP	55	77	68		PU-R260/85-SB
3.00-4" (260 x 85)	G	SCOOTY	56	87	75		PU-R260/85-GSC0
3.00-8"	G	KN	40	62	58		PU-3.00-8-GB
3.00-8"	S	KN	40	62	58		PU-3.00-8-SB
4.00-8"	G	RC	65	90	82		PU-R400/100GR
4.00-8"	S	RC	65	90	82		PU-R400/100SR
4.00-8"	G	Block	65	89	82		PU-R400/100GB
4.00-8"	S	Block	65	89	82		PU-R400/100SB

G = harmaa S = musta | G = grey S = black



*Unsere Ideen bewegen Menschen ...  
Our inventions move people ...*



Visual Communication Thorsten Elleremann, Germany/Bielefeld

**Germany**

**Rolko Kohlgrüber GmbH**  
Industriestraße 14  
D-33829 Borgholzhausen

Phone +49 5425 9402-0  
Fax +49 5425 9402-20

[www.rolko.com](http://www.rolko.com)  
[info@rolko.com](mailto:info@rolko.com)

**Danmark**

**Rolko Scandinavia ApS**  
Suensonvej 2  
DK-8600 Silkeborg

Phone +45 87 20 18 88  
Fax +45 86 81 86 88

[www.rolko.com](http://www.rolko.com)  
[RolkoDK@rolko.com](mailto:RolkoDK@rolko.com)

**Netherlands**

**Rolko Nederland bv**  
Limburghaven 2b  
NL-3433 PK Nieuwegein

Phone +313 02 41 32 30  
Fax +313 02 54 16 55

[www.rolko.com](http://www.rolko.com)  
[RolkoNL@rolko.com](mailto:RolkoNL@rolko.com)

**Poland**

**Rolko Polska Sp.z.o.o.**  
ul. Paderewskiego 3 b  
PL-59400 Jawor

Phone +48 76 870 70 70  
Fax +48 76 870 70 20

[www.rolko.com](http://www.rolko.com)  
[RolkoPL@rolko.com](mailto:RolkoPL@rolko.com)

**Finland**

**Tradotim Oy**  
Raamikatu 1  
FI-38200 Vammala

Phone +358 3 5128 500  
Fax +358 3 5128 515

[swww.tradotim.fi](http://swww.tradotim.fi)  
[info@tradotim.fi](mailto:info@tradotim.fi)